

ABBERFIELD INDUSTRIES

**Off Street
Car Park Fee
Collection**



**Introduction to
PAY ON FOOT
SYSTEM**

**Produced by
ABBERFIELD
INDUSTRIES**



**January
2008**

32 Cross Street, Brookvale, Sydney, Australia
Tel: 61 (0)2 99392844 Fax: 61 (0)2 99383462



CONTENTS

Operations Section Page

System Description

INTRODUCTION

Pay on Foot Fee Collection System	2
-----------------------------------	---

SYSTEM OPERATION DETAILS

Drive Through Time	3
Exit Grace Time	3
Recycled Cards	3
Card Types	3
Pass Card	4
Discount Card	4
Lost Card	4
Exit Only Cards	4
Management Information	5

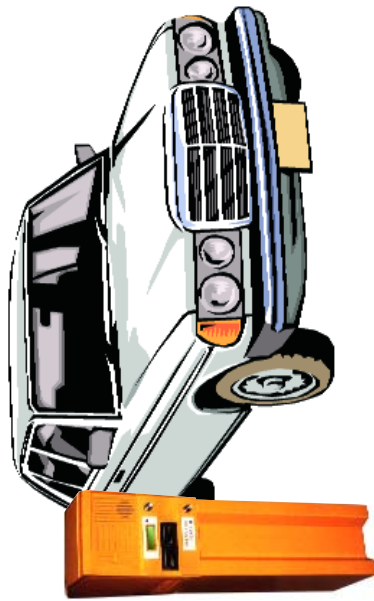
Equipment Options

EQUIPMENT OPTIONS

Card Loading Clearance	5
Module Replacement	5
Communications Module	6
Car Park Full Sign	6
Alarm Conditions	6
Desktop Controller	7
Entry Stands	8
Self Serve Pay Station	9
Pay Booth	12
Parking Tickets & Pass Cards	13

PAY ON FOOT CAR PARK FEE COLLECTION SYSTEM

Entry

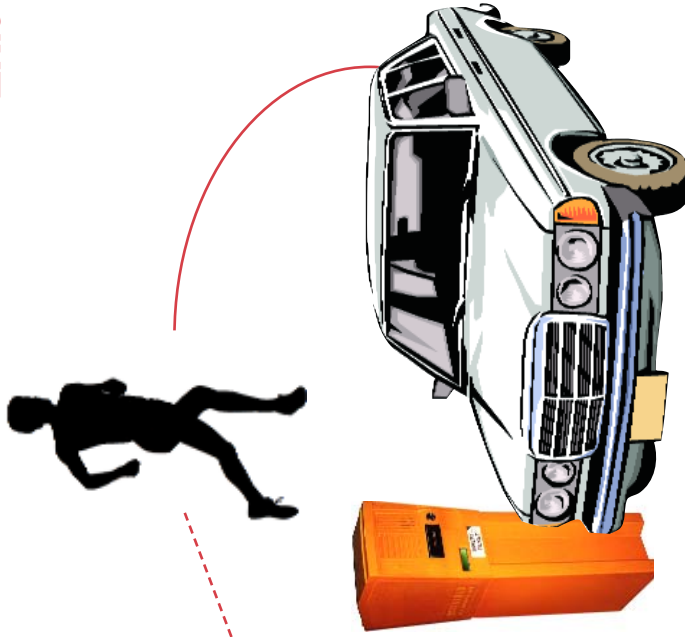


Pay Station

Self Serve or Manual



Exit



ENTRY

- * Card issued encoded with time and date details initiated by; Loop detector or push button or loop and button.
- * Boom gate opens.
- * Alarm output if fault occurs.

MANUAL PAYMENT

- * Card taken to cashier.
- * Inserted in desktop machine.
- * Screen shows fee due.
- * Pay notes and coins over counter.
- * Change given.
- * Receipt if required.
- * Card returned to driver.

OR

SELF SERVE PAYMENT

- * Insert card into Self Serve Pay Station
- * Screen shows fee due.
- * Pay notes and coins into machine.
- * Change given.
- * Receipt if required.
- * Card returned to driver.

EXIT

- * Insert card.
- * Card captured.
- * Boom gate opens.
- * Alarm output if fault occurs.

SYSTEM OPERATION DETAILS

Drive Through Time

It is possible to set a drive through time to allow a car to drive out of the car park again, without parking and without paying, as may be necessary in a car park full situation. If the card from the entrance is taken straight to the exit it will operate the boom gate. This drive through time is usually set for 10 minutes.

Exit Grace Time

It is normal to set a grace period of around 15 minutes between the time that payment is made and the time allowed to exit. This period can be set to any value. Should the driver exceed the period the card will be returned rather than captured and will need to be taken back to the cashier or Self Serve Pay Station again. Should a drive through time be set this adds to the exit grace time, ie. default conditions of 15 minutes exit time plus 10 minutes drive through time gives a total grace time of 25 minutes.

Recycled Cards

Operated as detailed, the cards can be recycled. If the tickets are plastic their life can be many times that of a paper ticket and then these tickets, although dearer to purchase, become the cheapest system, on a cost per transaction basis.

Card Types

A range of card types can be offered, such as Pass Card, Discount Card, Lost Card, Exit Card and Fixed Price Cards.

SYSTEM OPERATION DETAILS continued ...

Pass Card

These can be programmed for a preset number of entries, or a preset future date or both. If both are nominated the card is valid until the first occurrence of entry or date limit. The exit stand can be programmed to capture or return an expired pass card. If the Pass Card is inserted into the Pay Station the display will show remaining credit and the card will be returned to the driver. Standard pass cards require sequential use, entry, exit, entry etc. Master Pass Cards do not require sequential use.

Discount Card

Like a Pass Card, access is obtained to the car park but payment for parking must be made before using the exit. The Manual Desktop Controller or the Self Serve Pay Machines recognise the discount details and charges accordingly. When exiting, the card is returned and the boom gate does not open until the card is taken by the driver. This function can be set so as to only be active during certain times, such as "after hours".

Lost Card

If a driver loses his card an attendant can issue a "Lost" Card to allow exit. Some Self serve machines include a "Lost Button". Press this and the machine display shows a penalty fee. Pay the fee (notes, coins and change given) and a card is issued allowing exit.

Exit Only Card

This card allows drivers only to exit. It is usually set for one exit and therefore the card can be captured.

SYSTEM OPERATION DETAILS continued ...

Management Information

A printed audit ticket can be issued from the attendant's Desktop Controller at any time, plus when the attendant "logs" off. The Self Serve Pay Stations also issue an audit ticket.

In addition, reporting may be provided on an office computer, of all car park activities, revenues collected, usage patterns etc. refer Management Information Manual.

EQUIPMENT OPTIONS

Card Loading and Clearance

The Entrance Stand can be loaded with cards and the Exit Stand can be cleared of used cards from a rear door without effecting normal use of either machine.

Module Replacement

The Entrance card dispensers and Exit card encoders slide into place and automatically plug into robust self aligning electrical sockets with gold plated contacts. This permits rapid on site replacement for service or maintenance purposes by unskilled operators. The display on the control module shows fault conditions to assist in service work.

This same principle applies to the components in the Self Serve Pay Stations and the cashiers Desktop Controller.

EQUIPMENT OPTIONS continued ...

Communications Module

This device is optional and allows data transfer between a Desktop Controller and the Entrance and Exit Controllers. It is then possible to remotely close the car park, open boom gates, implement an active "anti Pass Back" feature, update clock settings in all units and maintain an active indication of cars in the car park, or conversely, spaces available.

Car Park Full Sign

This can be provided in two ways. The normal is a sign driven from the Entrance Controller in conjunction with a Desktop Controller. In this way the sign is under automatic control based on the numbers of cars in the car park, or it can be directly controlled by the operator, from the Desktop Controller. Alternately a sign can operate under its own control, based on inputs from the Entrance and Exit boom gates.

Alarm Conditions

Entrance and Exit stands, Self Serve Pay Stations and Desktop Controllers include an alarm circuit to indicate a fault condition. This is usually wired for remote monitoring. If a communications module is included in the system, fault conditions can be transmitted by the data cables and then be displayed on the Desktop Controller.

EQUIPMENT OPTIONS continued ...

Desktop Controller & Manual Pay Station



*Manual Pay Station
or Desktop Controller*

Stalk Display



Rear View



Manual Pay Station

Used to process parking cards, control the car park or issue Pass Cards. All of these features can be achieved by simple keyboard entry. There is effectively no function that this compact device cannot provide and for all normal applications a host computer is not needed.

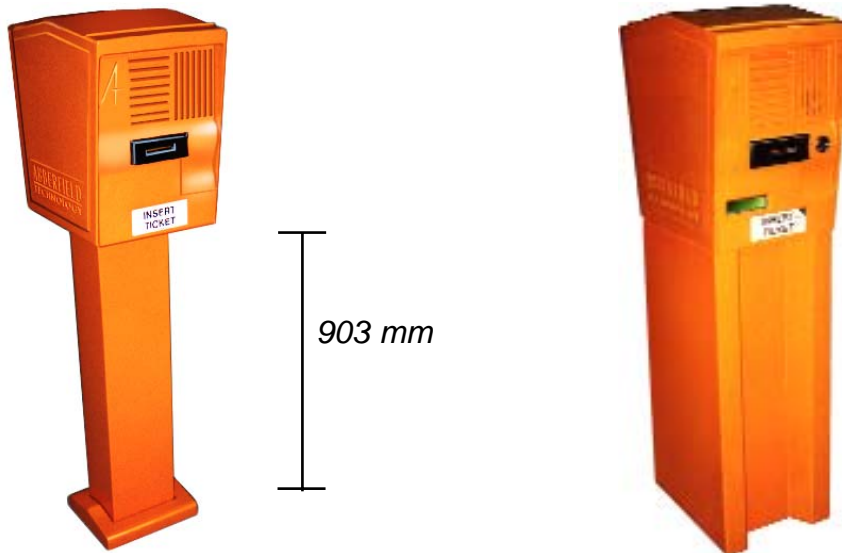
Desktop Controller

This is the same device as a Manual Pay Station, with a different programme. The name change reflects its use, usually at a reception or similar place, to issue Pass cards etc. Fitted with a communications module they can be used to remotely open boom gates and mirror some of the functions of a Manual Pay Station.

Equipment Options continued ...

Entry Stands

A common stand is used for the Entry and Exit configured by the modules installed and fascia fitted. Two types of base assemblies are offered. Stands are produced from aluminium and painted to suit the customer's requirements.



DE Stand

DE preferred

A standard height covers most applications, whether mounted on the roadway or an island. Stands to different heights can be produced to order.

Stands that "Goose neck" forward are also available.



Basic Entry Fascia

*Entry Fascia with
display & intercom*

Basic Exit Fascia

*Exit Fascia with
display & intercom*

Lower cost units can delete the intercom and display. The Entry "Press for ticket" button can be deleted if ticket issue is from a car park present loop only.

Equipment Options continued ...

Self Serve Pay Station

APSE 2000 SERIES

Compact full feature machine

Abberfield's latest model of Self Service Pay Stations is even smaller. Produced in stainless steel and painted to suit the customer's requirements, the APSE 2000 can include a full Management Information System to trace use of the car park and monetary transactions.



APS 2000 Standard full featured machines

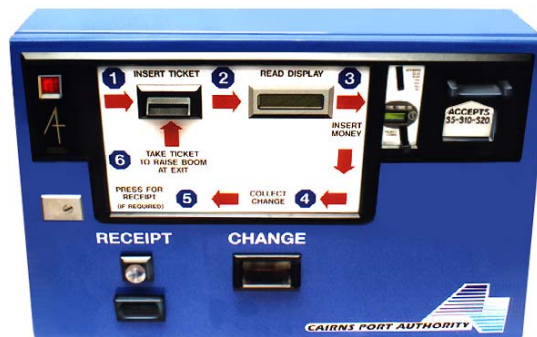
Equipment Options continued ...

APS 2500 SERIES

All Pay Stations are produced in stainless steel and painted to suit the customer's requirements. The 2500 has extra space to fit extra modules, such as all denomination change giving.



APS 2500 Standard full featured machine



APS 2500P Premium grade full featured machine



APS 2500P with Lost Card and Prepay features added

Equipment Options continued ...



APS 2250 SERIES

This compromises size between the 2000 and 2500 cabinets. Providing extra module space in still a small machine.

APS 2250 SERIES

Where size and price are important. This tiny machine can be installed adjacent to fully featured machines giving greater customer throughput.



Equipment Options continued ...

Pay Booth



Pay Booth

For cashiers processing of parking card, available in various formats. The standard booth can have one or two self serve Pay Booths incorporated into the front wall. These can have the same or different capabilities.

If used by a cashier the upper panel of the stainless steel door is unlocked and slides down into the bottom section.

Housings are made from aluminium frame and stainless steel cladding. The roof can be plain or an optional curved roof can be added. Air conditioning is included. The Booth can be bolted securely and permanently wired or it can be portable with electrical connections plugged in as needed.

Equipment Options continued ...

Parking Cards & Pass Cards

The Abberfield system will operate on paper or plastic tickets and these are the same length and width as a credit card but usually thinner. It is most strongly recommended that plastic is used as they are more robust than paper, will dispense better and are unaffected by water. Most importantly plastic cards allow the parking ticket to be recycled and although dearer to purchase than paper the plastic will provide the cheapest per use cost of any system.

Pass Cards are the same as the normal parking card but if preferred they can be of thicker material. Generally it is recommended they are 0.5mm thick, about two thirds that of a credit card.

Cards can be obtained from Abberfield and produced in any quantity through the company's own bureau printer. Customer specific artwork is produced in house and cards personalised with a user photo can also be provided.

Plastic P.V.C. material cards are usually used, but higher quality polyester cards are available on request.

