



ABBERFIELD

INDUSTRIES

PTY LTD ABN 61 000 112 569

CS20

*series*

# COIN SELECTORS

**CS20 DESIGNATES:- COIN SELECTOR SERIES 20**

Series 20 refers to those units of open construction, for building into equipment and incorporating front coin entry.

## TECHNICAL & SERVICE DETAILS

**ABBERFIELD INDUSTRIES PTY LTD**

32 Cross Street, Brookvale, Sydney, NSW 2100 Australia

Tel: (02) 9939 2844 Fax: (02) 9938 3462

International Tel: +61-2 9939 2844 Fax: +61-2 9938 3462

Email: [contact@abberfield.com.au](mailto:contact@abberfield.com.au)

Internet: [www.abberfield.com.au](http://www.abberfield.com.au)

# CS20 SERVICE HINTS

## FACE PLATE

The correct face plate should be used. If no coin return chute is fitted then the face plate without the bottom exit hole should be used. The insert label is identical except that no cut out exists where the exit would otherwise have been.

## MOUNTING

The mechanism is intended for mounting on the inside of a panel, with the face plate on the outside. This means that only four mounting holes, plus coin entry, and exit holes need be made in the panel.

Mounting screws are inserted into the moulding. When mounted in this manner no screw heads are visible, and the best possible appearance is achieved.

Normal panels are relatively thin steel plate, however in some cases particle wood board is used. When this is done it is important to ensure that the coins enter the coin track freely, and do not simply rest upon the board. The larger the coin, or the thinner the board, the less of a problem.

## MICRO SWITCH

The micro switch must be set so that it has "after travel" beyond both on and off switch positions. Otherwise the unit may sometimes neither start, nor stop. Also check that the switch arm will travel freely into the slot.

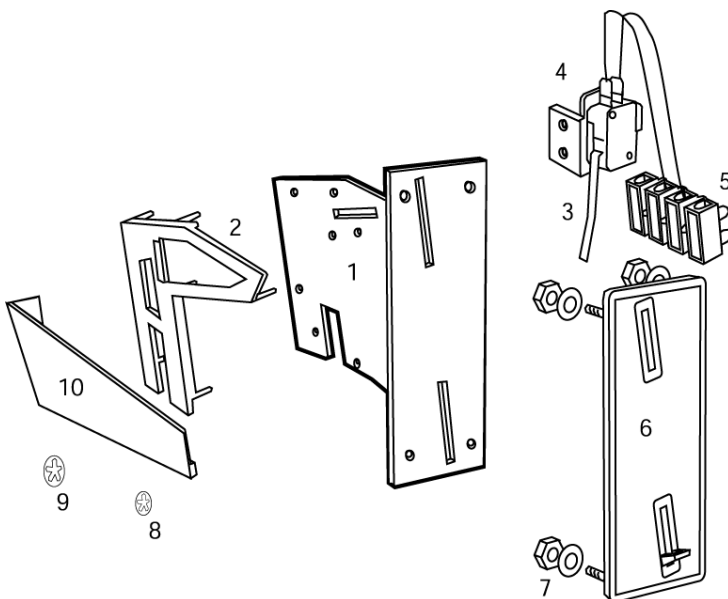
## DATE CODING

The rating label usually carries a date coding in the top left hand corner. This comprises the month followed by the last digit of the year, ie. December 1992 would be 122. Services are usually coded in a similar way but have prefix S ie S122.



WITH REJECT COIN SLOT

NO REJECT COIN SLOT



## CS20 SERIES MECHANISM

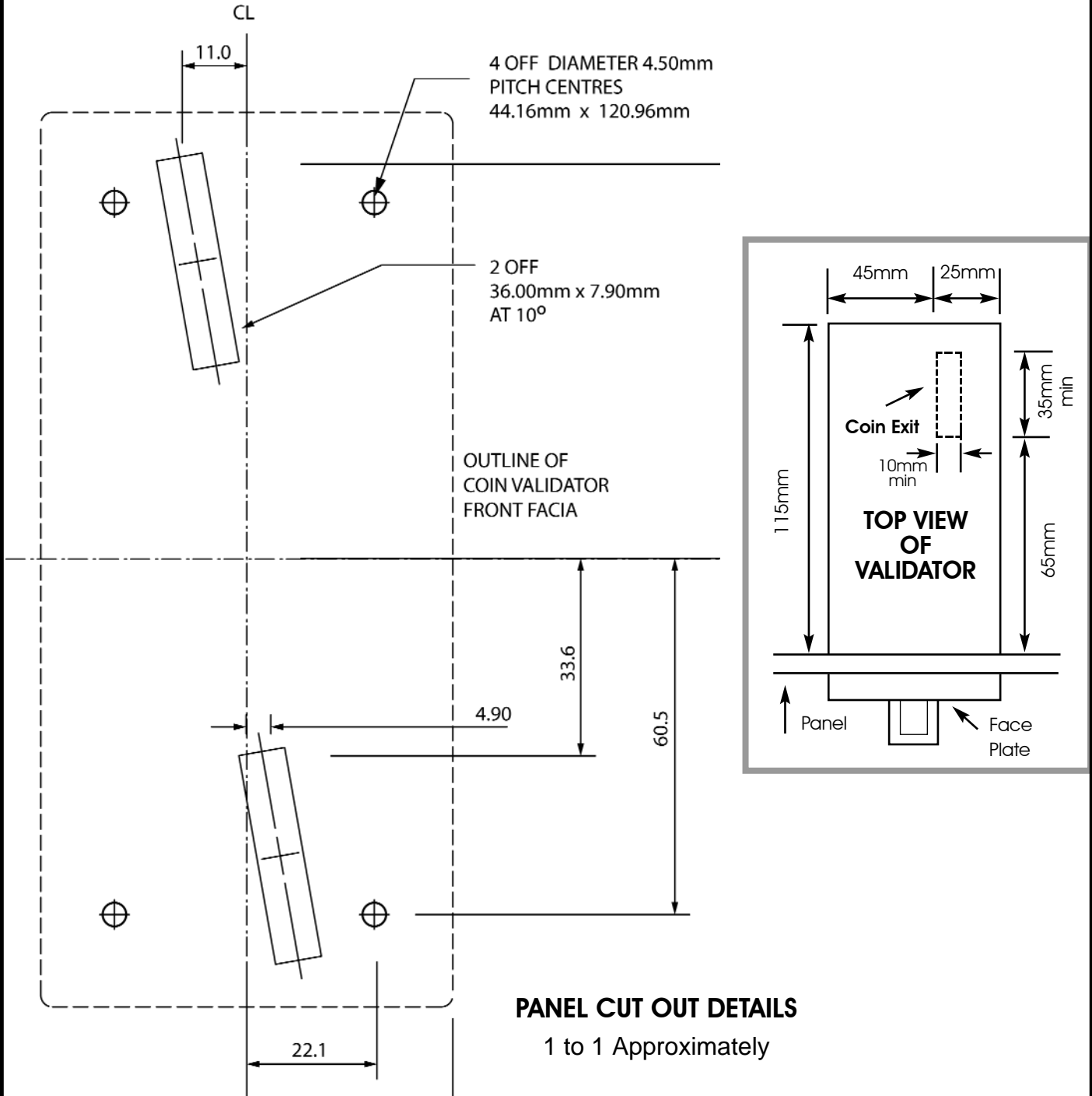
1. CS20 Main moulding
2. Coin track (various coins and tokens)
3. Micro switch
4. Switch bracket
5. Terminal Block
6. Face Plate
7. Face Plate nut & washer set (M4)
8. Small push on nut(7 per set)
9. Large push on nut(2 per set)
10. Return chute (optional)

# MOUNTING DETAILS

Panel mounting is achieved by fitting the face plate on one side of the panel and the validator on the other.

Slip fitting is possible with the addition of a mounting bracket to the bottom mounting screws. Screws through this extra bracket are usually covered by a cash box fascia.

The bottom coin return slot is only used if a reject coin feature is used.



32 Cross Street Brookvale Sydney  
New South Wales 2100 Australia  
Telephone: 61 - (0)2 9939 2844 Fax: 61 - (0)2 9938 3462  
Email: [contact@abberfield.com.au](mailto:contact@abberfield.com.au)  
Internet: [www.abberfield.com.au](http://www.abberfield.com.au)